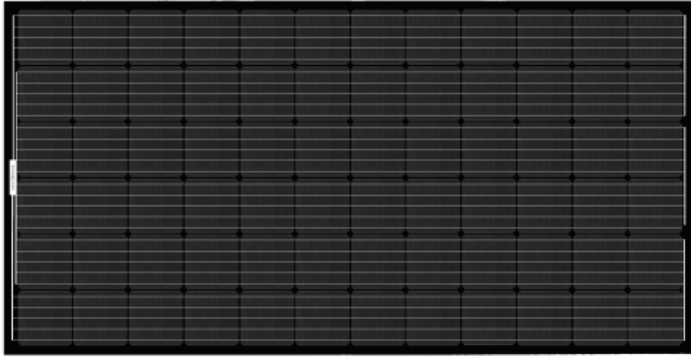


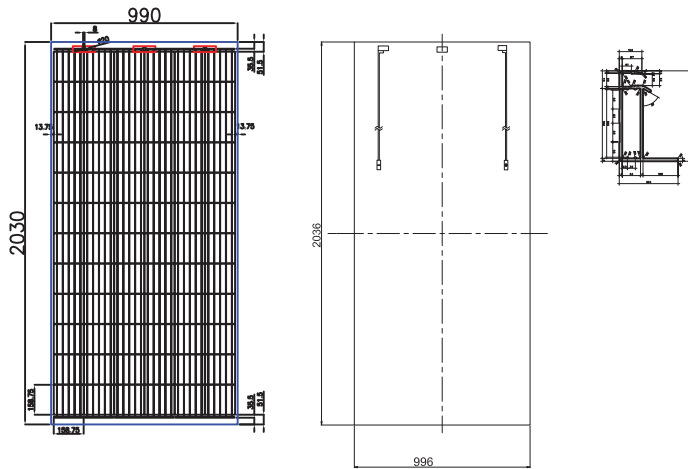


**HIGH EFFICIENCY 390W**  
**MONO-CRYSTALLINE PV MODULE**  
**M390-A1F**



**BLACK HP**  
M390-A1F  
High Efficiency Mono Module  
**390W**  
1000V

### ENGINEERING DRAWING (mm)



### MECHANICAL DATA

SPECIFICATIONS	DATA
Cell Type	Mono-crystalline
Cell Arrangement	72 [12x6]
Dimensions	2036x996x40mm
Front cover	3.2 mm tempered glass
Frame	Anodized aluminum alloy black frame
J-Box	IP68, 3 bypass diodes
Cable	4mm <sup>2</sup> , 12 AWG (UL)
Cable Length (Including Connector)	500mm, 1000mm, 1200mm
Connector	MC4

### ELECTRICAL DATA | STC\*

MITREX	BLACK HP
Nominal Max. Power (Pmax)	390W
Opt. Operating Voltage (Vmp)	41.9V
Opt. Operating Current (Imp)	9.31A
Open Circuit Voltage (Voc)	47.2V
Short Circuit Current (Isc)	9.77A
Module Efficiency	19.2%
Operating Temperature	-40°C ~ +85°C
Max. System Voltage	1000V (IEC/UL)
Max. Series Fuse Rating	20A
Application Classification	Class A

### TEMPERATURE CHARACTERISTICS

SPECIFICATIONS	DATA
Temperature Coefficient (Pmax)	-0.390% / °C
Temperatures Coefficient (Voc)	-0.300% / °C
Temperatures Coefficient (Isc)	-0.060% / °C
Nominal Module Operating Temperature	42 ± 3°C

\* The specifications and key features contained in this datasheet may deviate slightly from our actual products due to the on-going innovation and product enhancement. Mitrex Inc. reserves the right to make necessary adjustments to the information described herein at any time without further notice. Please be kindly advised that PV modules should be handled and installed by qualified people who have professional skills and please carefully read the safety installation instructions before using our PV modules.

\* Under Standard Test Conditions (STC) of irradiance of 1000 W/m<sup>2</sup>, spectrum AM 1.5 and cell temperature of 25°C.